



PT. SINAR LAWU KENCANA

# CORPORATE PROFILE

PT. SINAR LAWU KENCANA

Kompl. Perkantoran Lbk. Bulus Trb. TS.2

Jl. Raya Jagorawi No.1 Kel. Lebak Bulus Kec. Cilandak

Jakarta Selatan

Indonesia

**Tel:** + 62 21 33168861

Email: [priyo@sinarlawu.com](mailto:priyo@sinarlawu.com)

Website: [www.sinarlawu.com](http://www.sinarlawu.com)



# Table of CONTENTS

- 01. Welcome to PT. Sinar Lawu Kencana - A brief History
- 02. Driven by strong and clear Vision and Mission Statement
- 03. Corporate Value
- 04. Who we are in brief -Corporate Information
- 05. Innovation minded – Structure Organization
- 06. Beyond Boundaries – Our Core Business
- 07. Proven and Outstanding - Track Records
- 08. We Meet Your Demand – List Of Equipments And Asset
- 09. We won't made it, but we make it perfect operation- Our  
Specialized service Photos
- 10. Scope of Work



# Welcome to PT. Sinar Lawu Kencana

## A BRIEF HISTORY

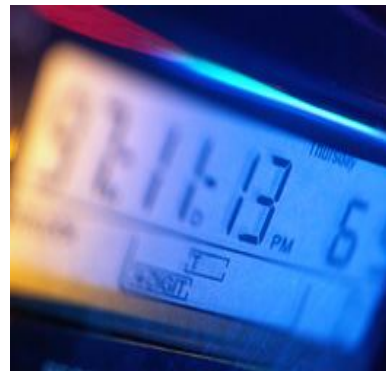
### 5 years of Engineering Excellence

**PT. Sinar Lawu Kencana** cooperation with **ANPEC** in Malaysia is a reputable engineering and construction contractor specializing in High Voltage, industrial. Since its incorporation on 16 December 2010, **PT. Sinar Lawu Kencana** and Anpec has secured and successfully completed sizeable order and contracts from Perusahaan Listrik Negara (PLN) Indonesia, Power Plant in Indonesia, numerous of Steel Mills, Water Treatment Plant, Mining, Cements, Chemical, and etc.

**PT. Sinar Lawu Kencana** was established primarily to provide complete supply, installation, testing and commissioning as well as operation and maintenance of electrical and instrumentation along the fields of low voltage wiring to high voltage utilities substation and industrial installation.

**PT. Sinar Lawu Kencana** provides complete range of equipments and accessories for control and protection of distribution and power transformers. PT. Sinar Lawu Kencana is also country supply of Terman Italy and MR Germany.

Through the years, **PT. Sinar Lawu Kencana** has actively ventured in numerous areas, expanding in size as well as offering a wider variety of service in the engineering field.



# Driven By Strong and Clear

# VISION & MISSION STATEMENT

## OUR VISION

**PT. Sinar Lawu Kencana** will consistently contribute, succeed, grow and stay ahead as a reputable engineering and construction contractor specializing in High Voltage, industrial and building facilities.

## OUR MISSION STATEMENT

**PT. Sinar Lawu Kencana** will devote its innovative ideas, sound management know-how, belief in continuous improvement and strong focus on the customer and play a pro-active role as a reputable service provider. We will operate as a dedicated partner, serving and growing together with all of our customers from the private and public sectors in Indonesia.



# CORPORATE VALUE

## PROFESSIONALISM

To work with excellent integrity, responsibility and giving priority to team work.

## QUALITY

To give priority to high quality, finishing work on schedule, effectively and efficiency in every activity and work

## SOCIAL RESPONSIBILITY

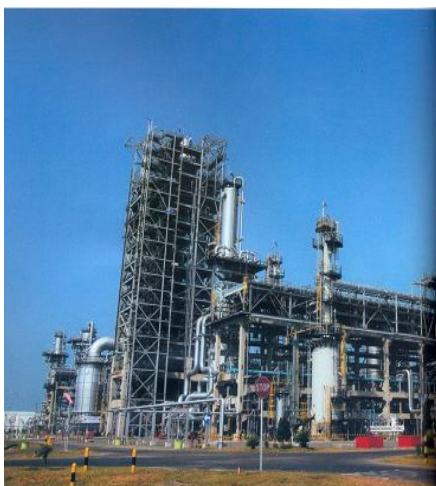
Give priority to safety and prosperity for all people, Including employee, customer and public, as for environment



Who we are in brief

# CORPORATE INFORMATION

- **Name:**  
PT. Sinar Lawu Kencana
- **Registered Address:**  
Jl. Karang Tengah Raya No. 61 Kel. Lebak Bulus  
Kec. Cilandak  
Jakarta Selatan 12440
- **Business Address:**  
Kompl. Perkantoran Lbk. Bulus Trb. TS.2  
Jl.Raya Jagorawi No.1 Kel. Lebak Bulus Kec. Cilandak  
Jakarta Selatan
- **Tel. :**  
Ph.: +62 21 33168861
- **E-mail Address:**  
admin@sinarlawu.com
- **Web:**  
www.sinarlawu.com
- **Banker:**  
BCA Bank, Cabang Cinere  
A/n: PT. SINAR LAWU KENCANA





# Innovative Minded Structure Organization

## **Priyono Priyo Sudharmo** **Director**

Priyono P.S. graduated in Electronic Engineering from the University Christian Satya Wacana Salatiga, trained in MR Germany, trained in MR RAP Kuala Lumpur. He had been working as Technical Manager (Technical) with Representative MR. His far-sighted leadership and professionalism is reflected in his ability to capitalize on his more than 5 years of impressive engineering, business and corporate affairs experience.

## **Yudho S.** **Commissaries**

Yudho S. graduated in Pharmaceutical in Palembang, He had been working as Technical Engineering. His far-sighted leadership and professionalism is reflected in his ability to capitalize on his more than 5 years of impressive engineering, He is known as an able entrepreneur and young talented corporate leader.

## **R. Salleh** **Technical Manager**

R. Salleh graduated in Electric Engineering from the University Technology of Malaysia, trained in Germany, Australia and Italy in High Voltage Engineering field. He had been working as a Service Manager (Technical) with MR (world leading manufacturer of On Load Tap Changer for Power Transformer). His far-sighted leadership and professionalism is reflected in his ability to capitalize on his more than 12 years of impressive engineering, business and corporate affairs experience. He is known as an able entrepreneur and young talented corporate leader.



# Beyond Boundaries

## OUR CORE BUSINESS

### TRADING AND SUPPLY

- Supply of Product Terman Italy for full range of Transformer accessories
- Supply of product MR Germany for On Load Tap Changer and accessories transformer.
- Full range of material for Low Voltage Electrical Contractor

### CUSTOMER CARE SERVICES

- Specialized service of MR On load tap changer for power Transformer.
- Transformer Conditions Monitoring Services (CMS), fault investigation, maintenance, repair and oil filterations, assessment transformer.
- Service and maintenance of switchgear, relays calibration and electrical faults on cables.
- Design, installation and commissioning substation up to 132kV.
- Low voltage services (M &E, wiring, street lighting, feeder pillar and switchboard).
- Maintenance panel.





# Proven and Outstanding

## TRACK RECORD

| NO | PROJECT  | LOCATION         | END USER                              | ORDER                                 | Work Period |
|----|--|------------------|---------------------------------------|---------------------------------------|-------------|
| 1  | Inspection and Gas Leak Detection for 145 KV ABB GIS type ELK 04 at DSS Serang Site                              | Serang           | DSS Serang Substation                 | PT. ABB Sakti Industri                | 2012        |
| 2  | Servicing of OLTC transformer  | Papua            | PT. Freeport Indonesia                | PT. ABB Sakti Industri                | 2012        |
| 3  | Servicing of OLTC transformer  | Sumatera         | PT. PLN (PERSERO) Sumatera            | PT. PLN (PERSERO) Sumatera            | 2011        |
| 4  | Transformer Repair and Maintenance, Cubicle Maintenance  | Jakarta          | PT. Samjin                            | Pt. Kharisma Putra                    | 2011        |
| 5  | Servicing of OLTC transformer  | Jakarta          | PT. Peruri                            | PT. Graha Usaha Teknik                | 2011        |
| 6  | Bottom Investigation, Maintenance and Testing (Control System, CT, PT, Protection of HV Panel & LV Panel, Relay) | Jakarta          | PT. JICT                              | CV. Candra Cakra Sentosa              | 2011        |
| 7  | Servicing of OLTC transformer  | Garut            | PT. Indonesia Power PLTP Derajat      | PT. Duta Sarana Multi Jaya            | 2011        |
| 8  | Servicing of OLTC transformer  | Papua            | PT. Freeport Indonesia                | PT. ABB Sakti Industri                | 2010        |
| 9  | Servicing of OLTC at Transformer LF and Supervise MTRAB, Oil Filter Trafo ABB                                    | Jakarta          | PT. Jakarta Cakra Tunggal Steel Mills | PT. Jakarta Cakra Tunggal Steel Mills | 2010        |
| 10 | Servicing of OLTC transformer  | Semarang         | PT. Indonesia Power Tambak Lorok      | PT. Kharisma Putra Utama              | 2010        |
| 11 | Servicing of OLTC transformer  | Jepara           | PT. TJB Power Services                | PT. TJB Power Services                | 2010        |
| 12 | Servicing of OLTC transformer  | Bogor            | PT. Holcim Indonesia                  | PT. Duta Sarana Multi Jaya            | 2010        |
| 13 | Servicing of OLTC transformer  | Pangkep Sulawesi | PT. Semen Tonasa                      | PT. Duta Sarana Engeneering           | 2009        |
| 14 | Repair leaking at transformer main tank and LV bushing, conduct test winding resistance and oil test             | Pahang           | Newsprint Industries                  | Newsprint Industries                  | 2009        |
| 15 | Maintenance Surge Arrestor at 132kV PMU  | Malaysia         | Malaysia                              | Malaysia                              | 2009        |

We meet your demand

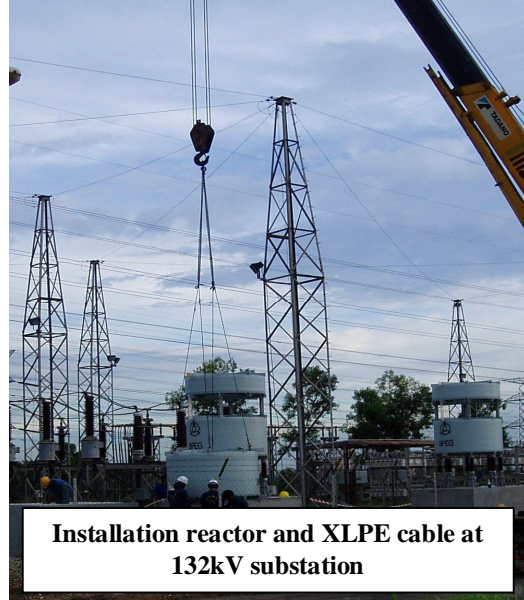
# LIST OF EQUIPMENTS AND ASSET

## EQUIPMENTS

| NO | DESCRIPTIONS                                 | BRAND       | MODEL       | QUANTITY |
|----|--|-------------|-------------|----------|
| 1  | 80KV Dielectric Breakdown Test Set           | Chonging    | SY80        | 1        |
| 2  | 4000 Ltrs/Hrs Transformer filtration machine | Chonging    | ZY-100      | 2        |
| 3  | 2000 Ltrs/Hrs Transformer filtration machine | Chonging    | ZY-30       | 1        |
| 4  | Moisture Content Test Set                    | Vaisala     |             | 1        |
| 5  | Three Phase Turn Ratio Tester                | Vanguard    | ATRT-03     | 1        |
| 6  | Transformer winding Resistance Meter         | Vanguard    | WRM 10P     | 1        |
| 7  | 5kV Digital insulation Tester                | Metrel      | MI2077      | 1        |
| 8  | 1 KV digital insulation tester               | Yokogawa    | 3212D       | 1        |
| 9  | Digital Earth Tester                         | Kyoritsu    | 4105A       | 1        |
| 10 | Cable fault Locator                          | Baur        |             | 1        |
| 11 | 40KV D.C Pressure test unit                  | Baur        |             | 1        |
| 12 | Relay Testing sets                           | Programma   | Sverker 850 | 1        |
| 13 | RCCB Tester                                  | Kyoritsu    | 5402D       | 1        |
| 14 | Hydraulic Crimping Tool                      | Cosway      | YQK-300     | 1        |
| 15 | Welding Set                                  | Super Power | ACT13A      | 1        |
| 16 | Standwille tools box                         | Standwille  |             | 1        |
| 17 | Grinder                                      | Makita      | GA4030      | 1        |
| 18 | Torque wrench                                | TVT         | 2000A       | 1        |
| 19 | Hand drill                                   | Borsch      | 10RE        | 1        |
| 20 | Vacuum pump                                  | Lybold      |             | 1        |

# Better than 1000 words

## OUR PHOTOS

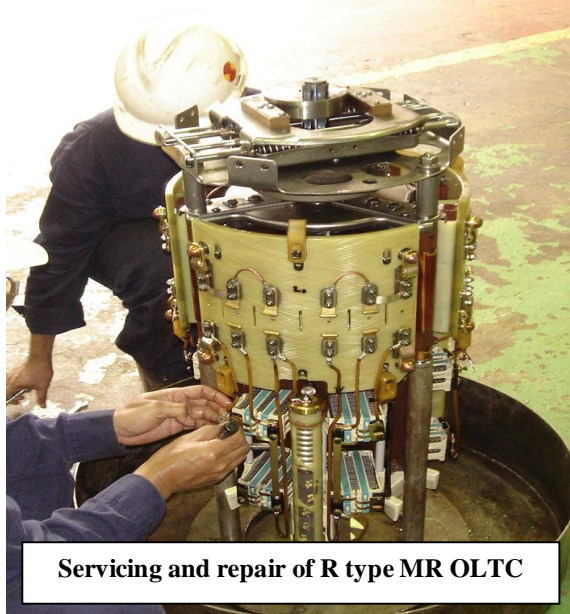






# We won't made it, but we make it perfect operation

## OUR SPECIALIZE SERVICE







## SCOPE OF WORK PT. SINAR LAWU KENCANA

### A. TRANSFORMER

- Service / Maintenance & Recondition Trafo, Low Voltage – High Voltage (400 - 500.000 Volt), as below :
  - ✓ Test DGA
  - ✓ Oil analysis transformer
  - ✓ Test dielectric strength oil transformer (Breakdown Voltage Test)
  - ✓ Purification / Filtering oil transformer
  - ✓ Reclamation oil transformer
  - ✓ Change new oil transformer
  - ✓ Repair / change seal / packing bushing transformer, cover & DGPT
  - ✓ Repair / Replacement Pressure Relief Device (PRD)
  - ✓ Inject gas N2 at transformer power
  - ✓ Procurement, servicing, installation and replacement :
    - On Load Tap Changer & Off Load Tap Changer
      - Replacement Spare Part
    - Braiders
    - Atmoseal bag (at conservator tank)
    - Bushing HV & LV
    - Accessories transformer: DGPT, Bucholz Relay, meter oil level, meter oil temperature, meter winding transformer, etc.
  - ✓ Infra red thermograph
  - ✓ Oven transformer

- Assessment Transformer, Low Voltage – High Voltage (400 - 500.000 Volt), as below :
  - ✓ Test DGA
  - ✓ Oil Analysis transformer
  - ✓ Test dielectric strength oil transformer (Breakdown Voltage Test)
  - ✓ Measurement insulation Resistance (Merger)
  - ✓ Measurement winding resistance
  - ✓ TTR
  - ✓ Measurement temperature
  - ✓ Polarization index (PI)
  - ✓ Test Tangent Delta
  - ✓ Test SFRA
  - ✓ Test Dirana
  - ✓ Test Furan
  - ✓ Infra red thermograph
- Rent transformer various capacities

## B. PANEL

- Procurement Panel MDP, ATS, Capacitor, Sync Ron, Cubicle LVMDP & MVMDP, procurement GCB, VCB, ACB, MCCB, etc.
- Substation test / Commissioning until 150 KV, as below :
  - ❖ Substation test / Commissioning
    - ✓ Investigation protection, control, operating and interlock system
  - ❖ Testing CT and PT
    - ✓ Ratio
    - ✓ Burden Test
    - ✓ Knee point (saturation)
    - ✓ Polarity check
    - ✓ Tangent Delta
  - ❖ Testing protection relay
    - ✓ Over Current Relay
    - ✓ Ground Fault
    - ✓ Distance
    - ✓ Differential
    - ✓ Synchronizing
    - ✓ Auto reclose
  - ❖ Analyses condition Circuit Breaker
- Testing Circuit Breaker, as below :
  - ✓ Test synchronization Circuit Breaker (time measurement) / Breaker Analyzer
  - ✓ Routine maintenance and test CB complete with SF-6 & check pressure (specifically for 150 kV)
- Cubicle / Switchgear MV & LV
  - ✓ Procurement, installation, service
  - ✓ Maintenance and repair ACB, MCCB, VCB
  - ✓ Modification and rewiring
  - ✓ Replacement spare part
  - ✓ Troubleshooting and solution
  - ✓ Cleaning Bus duct / Bus bar
  - ✓ Lightning arrester, grounding and spare part

## C. OLTC (On Load Tap Changer) at Transformer

### Service and Maintenance

- Oil Tap Changer brand MR, Type: M, MS, V, H, R, T
  - ✓ Dismounting and mounting of OLTC insert
  - ✓ Inspection of insulation distances of the oil compartment and the OLTC insert
  - ✓ Inspection of the mechanical parts
  - ✓ Replacement spare part
  - ✓ Replacement of the switching oil
  - ✓ Determination of the contact wear
  - ✓ Measurement of the transition resistors
  - ✓ Inspection of the motor drive, drive shaft and protective relay
  - ✓ Functional test
- Oil Tap Changer brand Alsthom Type: M, V
- Oil Tap Changer brand Easun Type: V
- Oil Tap Changer brand ABB



## D. GENERATOR

- Rewinding Stator & Rotor, generator AC & DC, Low Voltage – Medium Voltage (380 – 14.000 Volt)
- Overhaul / Service Stator & Rotor, generator AC & DC, Low Voltage – Medium Voltage (380 – 14.000 Volt)
- Recondition Generator, AC & DC, Low Voltage – Medium Voltage (380 – 14.000 Volt)
- Assessment Generator, AC & DC, Low Voltage – Medium Voltage (380 – 14.000 Volt), as below :
  1. Electrical :
    - ✓ Insulation resistance measurement (Merger)
    - ✓ Winding resistance measurement
    - ✓ Measurement temperature
    - ✓ Polarization Index (PI)
    - ✓ Surge Test
    - ✓ Test Tangent Delta
  2. Mechanical :
    - ✓ Alignment
    - ✓ Vibration analyzer measurement
    - ✓ Test Bearing
- Dynamic Balancing Rotor
- Repair core Stator & Rotor (Re staging)
- New manufacturing, repair Slip ring and commutation
- New manufacturing and repair Shaft
- Procurement coil rectangular ex import
- Repair / Recondition mechanic : Bearing Housing, Inner & Outer Cap Bearing, cover fan, body motor, terminal cable
- Overhaul / Service Engine Genset (Major & Minor Overhaul)



## E. ACCESSORIES TRAF0

- Product of **TERMAN (Italy)** together accessories for the control, protection distribution and power transformer with data as below:
  - ✓ Thermometers for distribution transformer
  - ✓ Thermometers for power transformer
  - ✓ PT sensor
  - ✓ Thermostats
  - ✓ Oil Level Indicators
  - ✓ Pressure Relief Devices
  - ✓ Eco Gel air Breathers
  - ✓ Pressure and Vacuum Gauges
  - ✓ Bushings
  - ✓ Buchholz Relay

- Product of **MESSKO** and service **OLTC** together spare part with data as below:

### ❖ **Messko (Germany):**

- ✓ Oil Level Indicators,
- ✓ Thermometer series (oil and winding temperature),
- ✓ Digital Thermometer MTEC,
- ✓ Smart-VT-IN Thermometer,
- ✓ Pressure Relief Device MPREC,
- ✓ Maintenance Free Breather MTRAB,
- ✓ Sensors/Signal converters/Indicators.



### ❖ MR (Germany):

- ✓ Spare part OLTC MR
- ✓ Service for ON Load Tap Changer brand MR: Type M, Type V, Type H, Type R, Type T, etc
- ✓ Spare part motor Drive: ED 100S, MA 7, MA9
- ✓ TAPCON 230 (AVR)
- ✓ Spare part and service Motor Drive Unit
- ✓ Oil Filter Unit
- ✓ Relay RS 2001